

# MONTHLY MEMBERSHIP PROGRESS REPORT

District 318 D

Results as of: 5/31/2020

GMT:

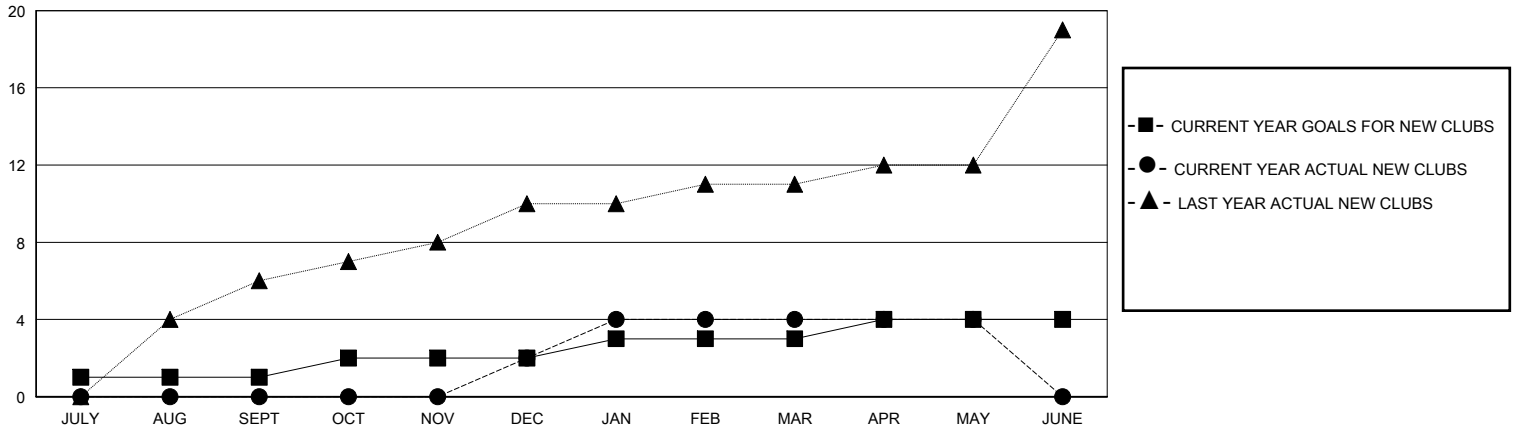
LOCATION INDIA

GMT CA

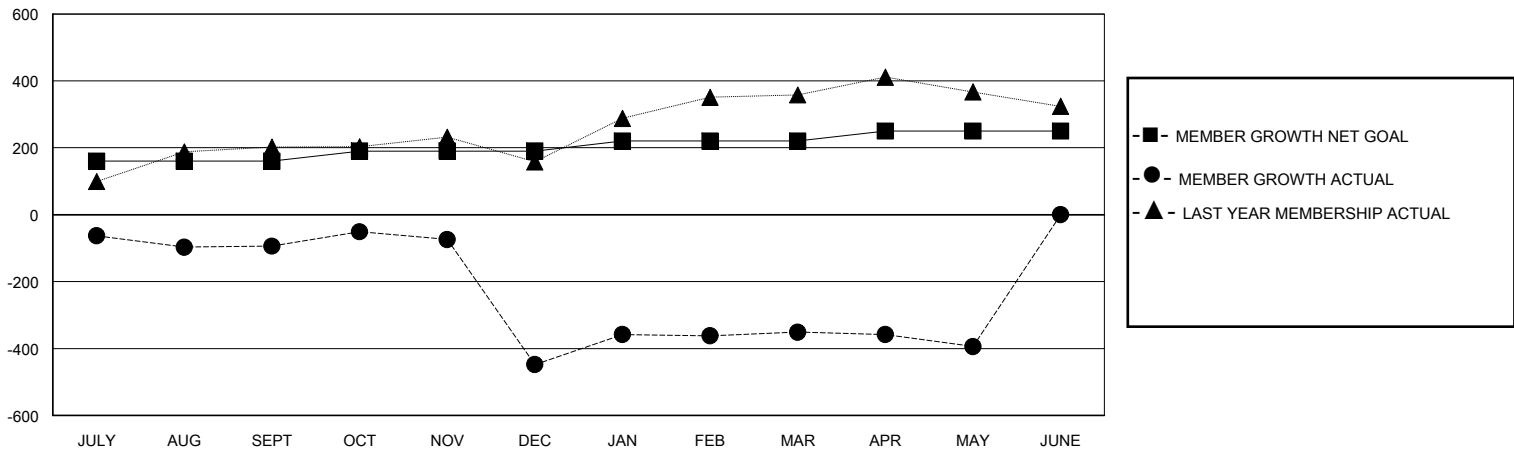
Clubs			
RESULTS FOR 2019-2020			
QUARTER	NEW CLUB GOAL	NEW CLUBS	DROPPED CLUBS
JULY/AUG/SEPT	1	0	0
OCT/NOV/DEC	1	2	14
JAN/FEB/MAR	1	2	1
APR/MAY/JUNE	1	0	0

Members			
RESULTS FOR 2019-2020			
QUARTER	MEMBER GROWTH NET GOAL	MEMBER GROWTH ACTUAL	DROPPED MEMBERS ACTUAL (including transfers)
JULY/AUG/SEPT	160	74	164
OCT/NOV/DEC	30	167	518
JAN/FEB/MAR	30	246	92
APR/MAY/JUNE	30	46	86

GOALS AND ACTUAL NEW CLUBS CUMULATIVE



GOALS AND ACTUAL MEMBERS CUMULATIVE



<b>DROPPED CLUBS: 15</b>	106 CLUBS OF 164 ADDED 1 OR MORE NEW MEMBERS  <a href="#">CLICK HERE FOR CUMULATIVE MEMBERSHIP DATA</a>	<b>GENDER DISTRIBUTION</b>	
		MALE 4,669 (82.71%) FEMALE 976 (17.29%)	
<b>DROPPED MEMBERS</b>		TOTAL FAMILY UNIT MEMBERS	1,645
DECEASED 17 CLUB CANCELLED 291 OTHER 552		FAMILY MEMBERS PAYING HALF DUES	881
<b>TOTAL 860</b>			